

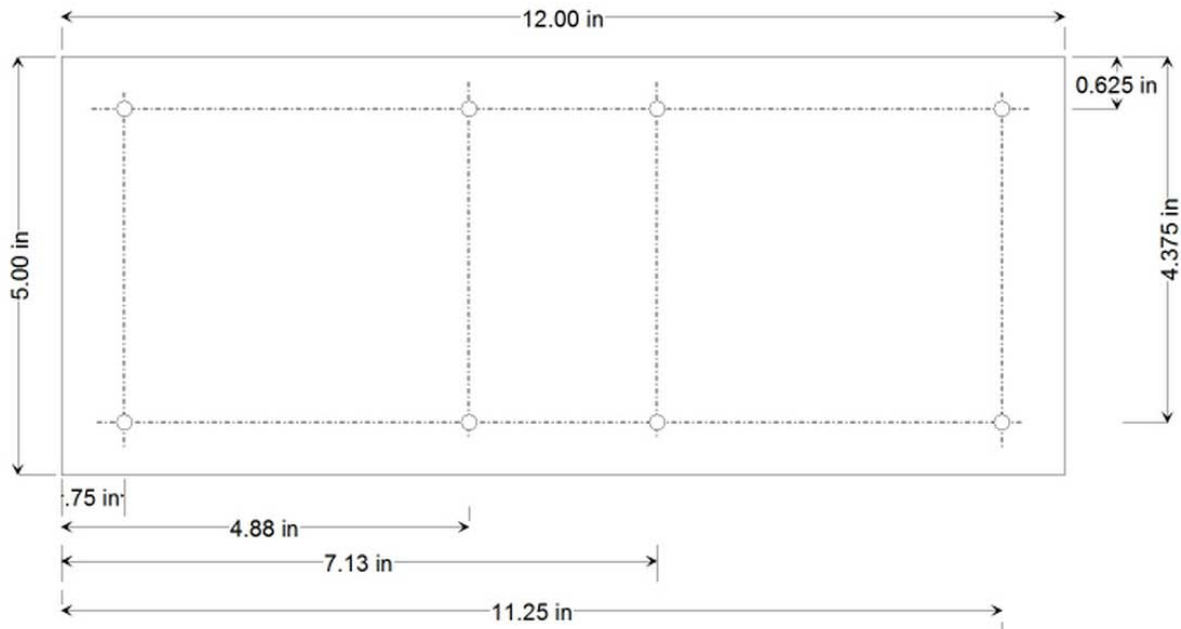
Channel Master Rotator Mounting Plate for Wade GN16/18T Tubular Bracketed Antenna Tower

The Wade “Golden Nugget” tubular bracketed antenna towers come with a rotator support bracket welded in the top section below the “bearing” and is designed for bottom-mounted rotators.

It is clear this bracket is not at all suited to the popular Channel Master CM9521A rotator.

What is required, is a vertical mounting plate spaced and drilled to for the 4 side mounting bolts of the CM9521A rotator. The plate is mounted across 2 of the tower tubular legs by means of two ¼”x20 2” bolts.

The plate I made is shown in the drawing below:



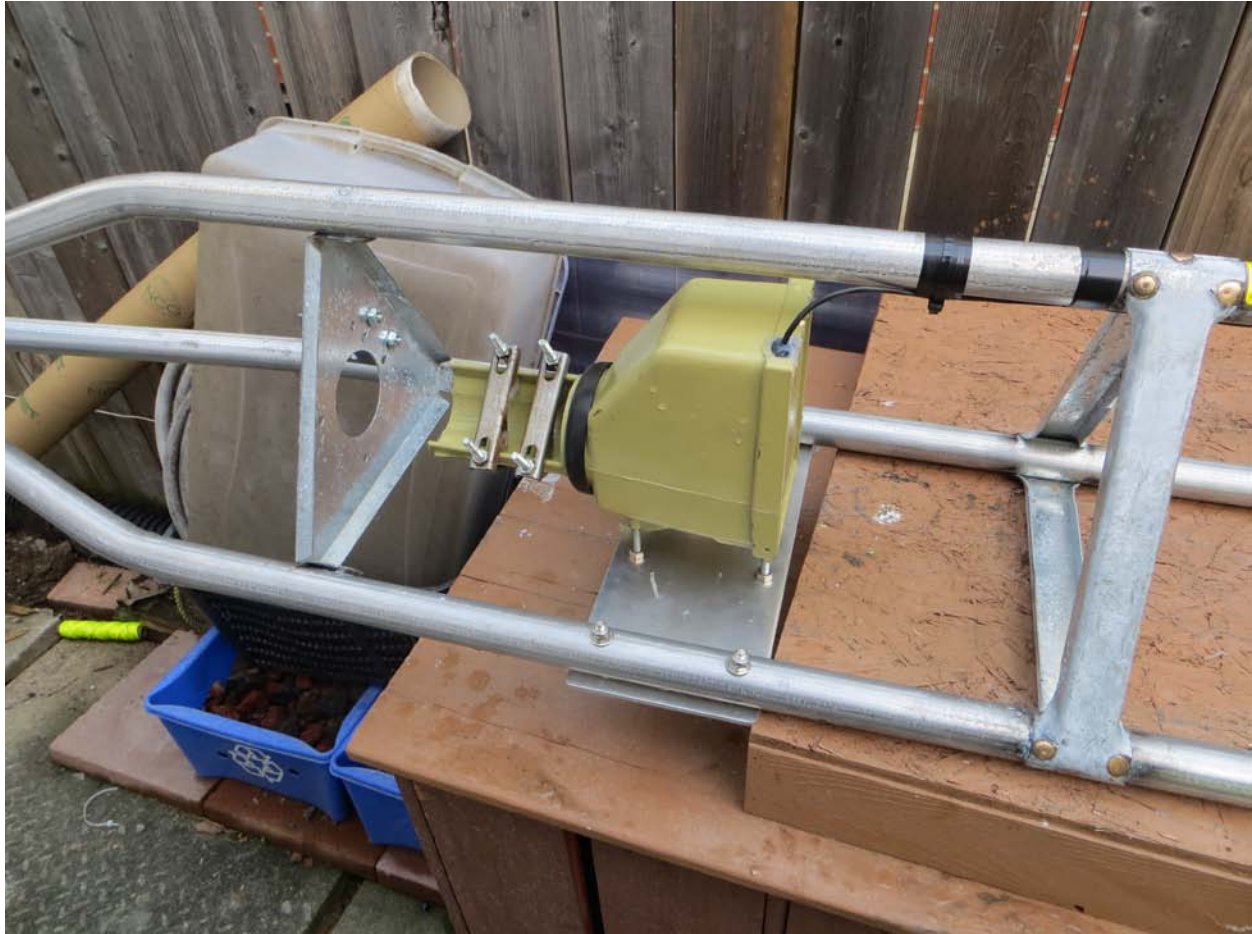
Notes:

1. Material is 3/16" thick aluminum
2. Deburr edges, no sharp corners
3. All holes (8) sized for 1/4" bolt (suggest 9/32" for clearance)

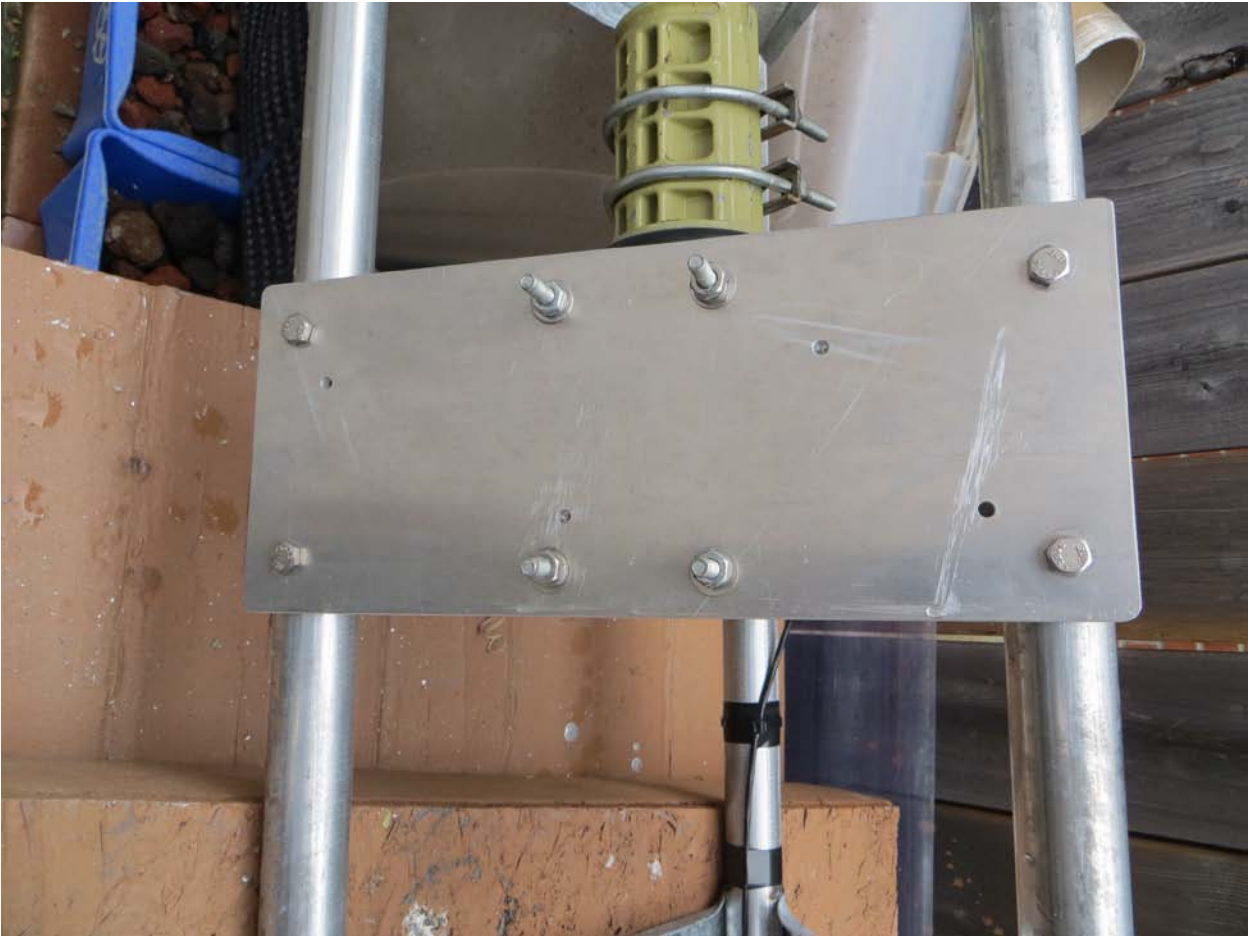
See photo below:

I mounted the rotator and mounting plate so as to position the rotator below the tower rotator mounting plate, in order to keep about 18" of mast inside the tower

The rotator mounting bolts are quite long and I used double nuts to adjust the centering of the rotator mast mount clamp section.



Showing rotator plate bolted to tower tubular legs.



View through tower rotor mounting plate showing centering or rotator clamp assembly:



Comments on purchasing the tubular towers:

Wade antenna manufactures a variety of antenna towers.

Visit their website at:

www.wadeantenna.com

Wade does not sell direct to the public, requiring you to order via one of their distributors.

However I found out that some of their distributors will also not sell direct to hams, who do not “trade”, have a company , GST # etc.

Some will of course, and it is most economical to have them quote you to pick-up at Wade in Brantford, as shipping costs are high..

I did find one company, Nutech Electronics in Hamilton, who actually carry stock of the antenna sections etc and you can just walk into the store and purchase them at reasonable cost.